

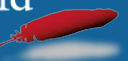


Towards an Indigenous Model of Health Equity

- Facilitated by Carrie Field, NIHB

Thursday, May 4 | 8:30 am

National Indian
Health Board



Health Equity in Indian Country

Rethinking How the Centers for Medicare & Medicaid Services
Approaches Health Equity for American Indians and Alaska
Natives

National Indian
Health Board

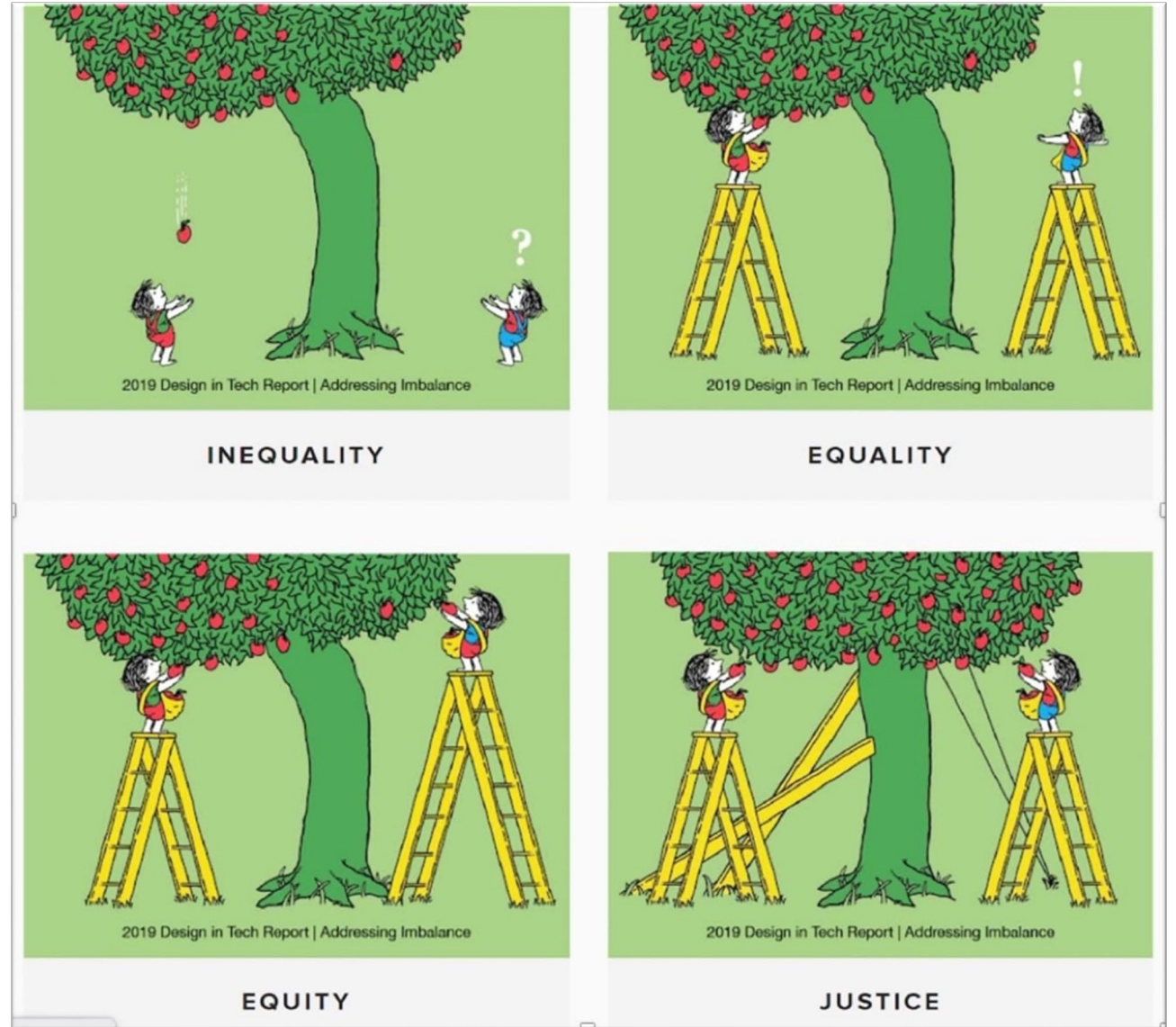


Read the 2023 Report

Concepts &
Definitions

Health Equity

What does health equity
mean to you?



(Pennsylvania Department of Health)

Concepts & Definitions

Social Determinants of Health



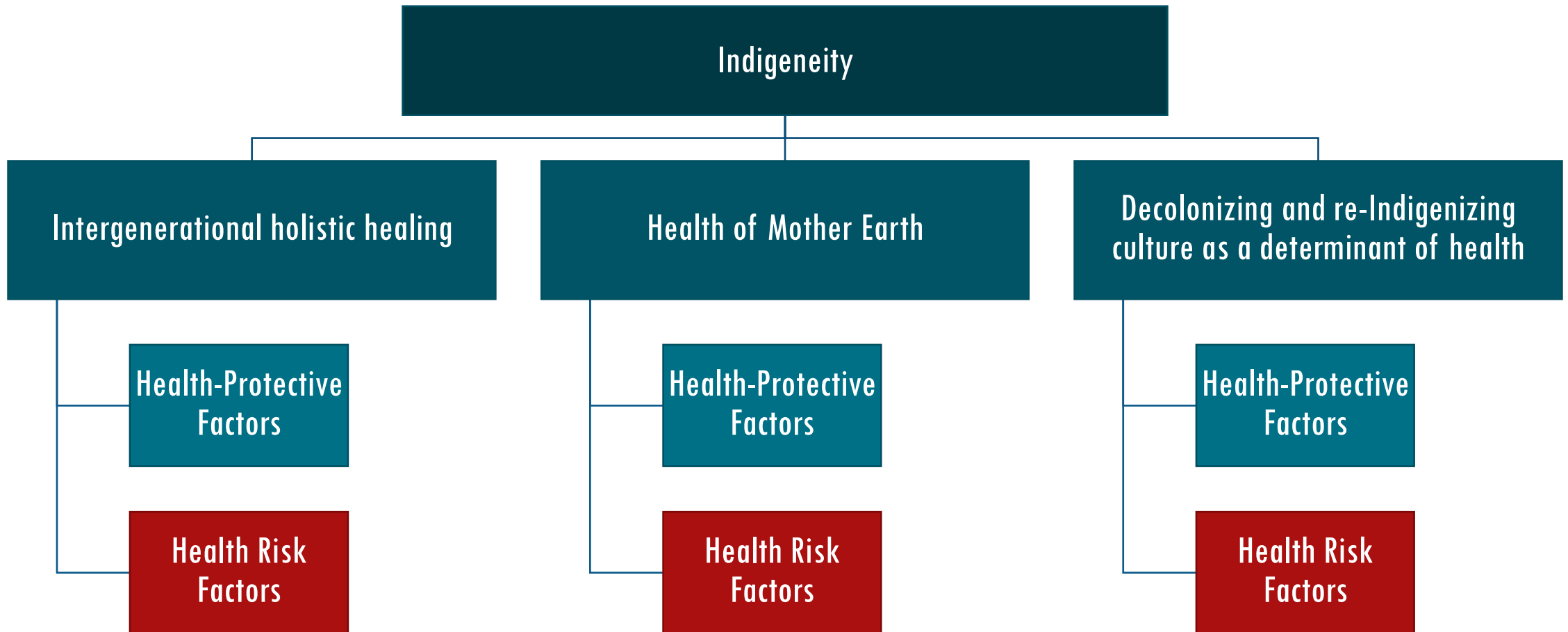
STRENGTHENING OUR CHEROKEE CHILDREN, FAMILIES & COMMUNITIES



United Nations Permanent Forum on Indigenous Issues

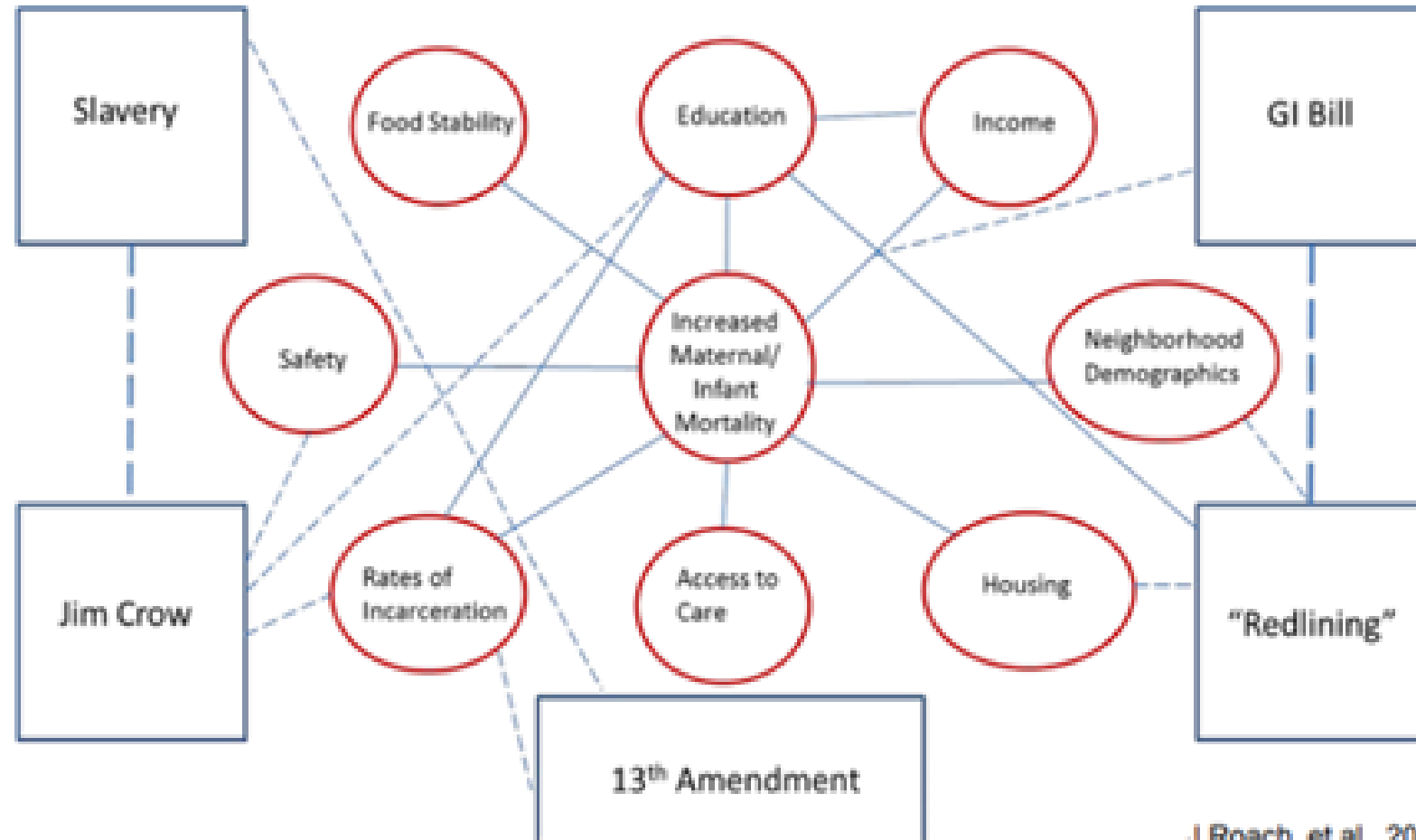


**Indigenous Determinants of Health
in the 2030 Agenda for Sustainable Development**

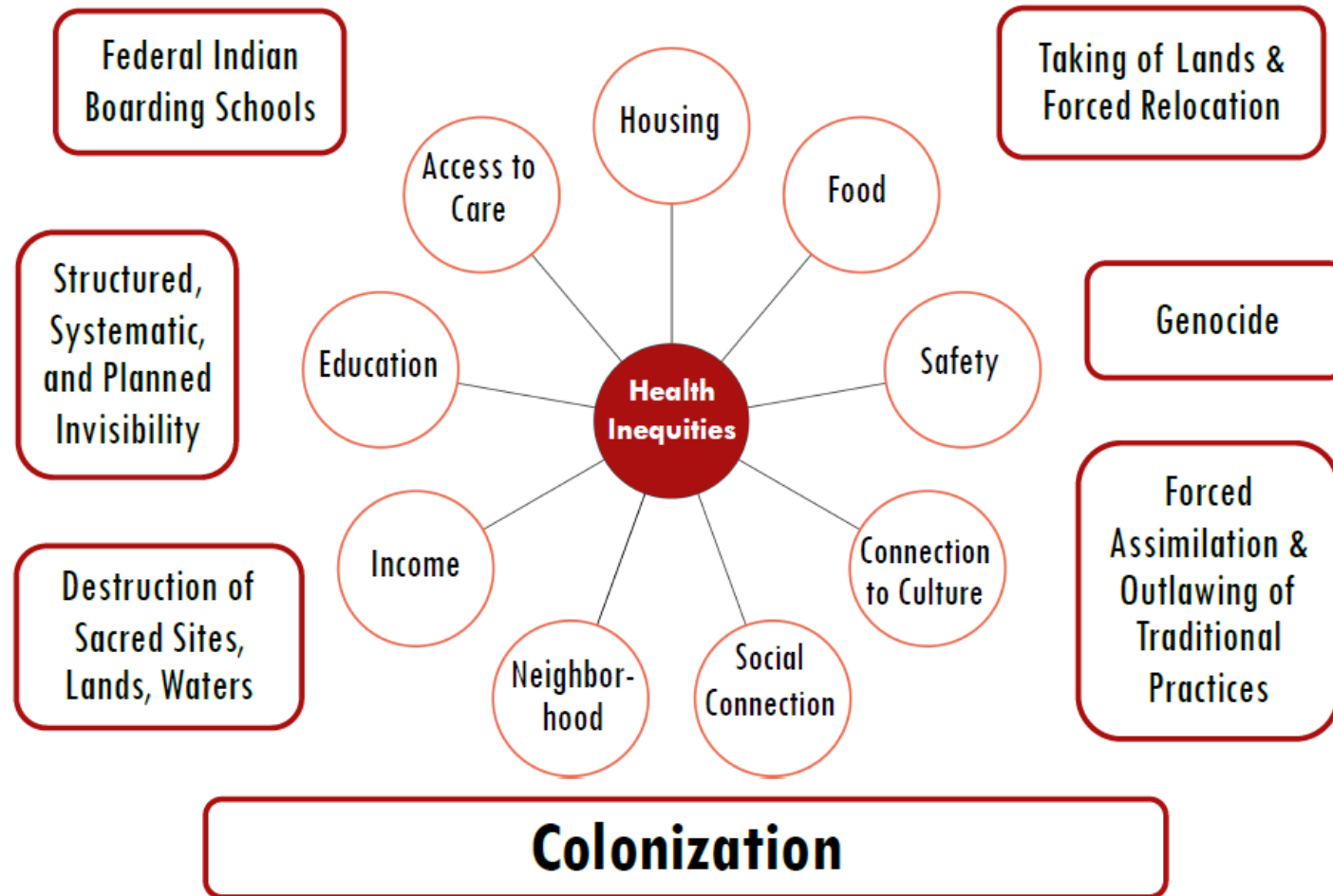


WEB OF CAUSATION

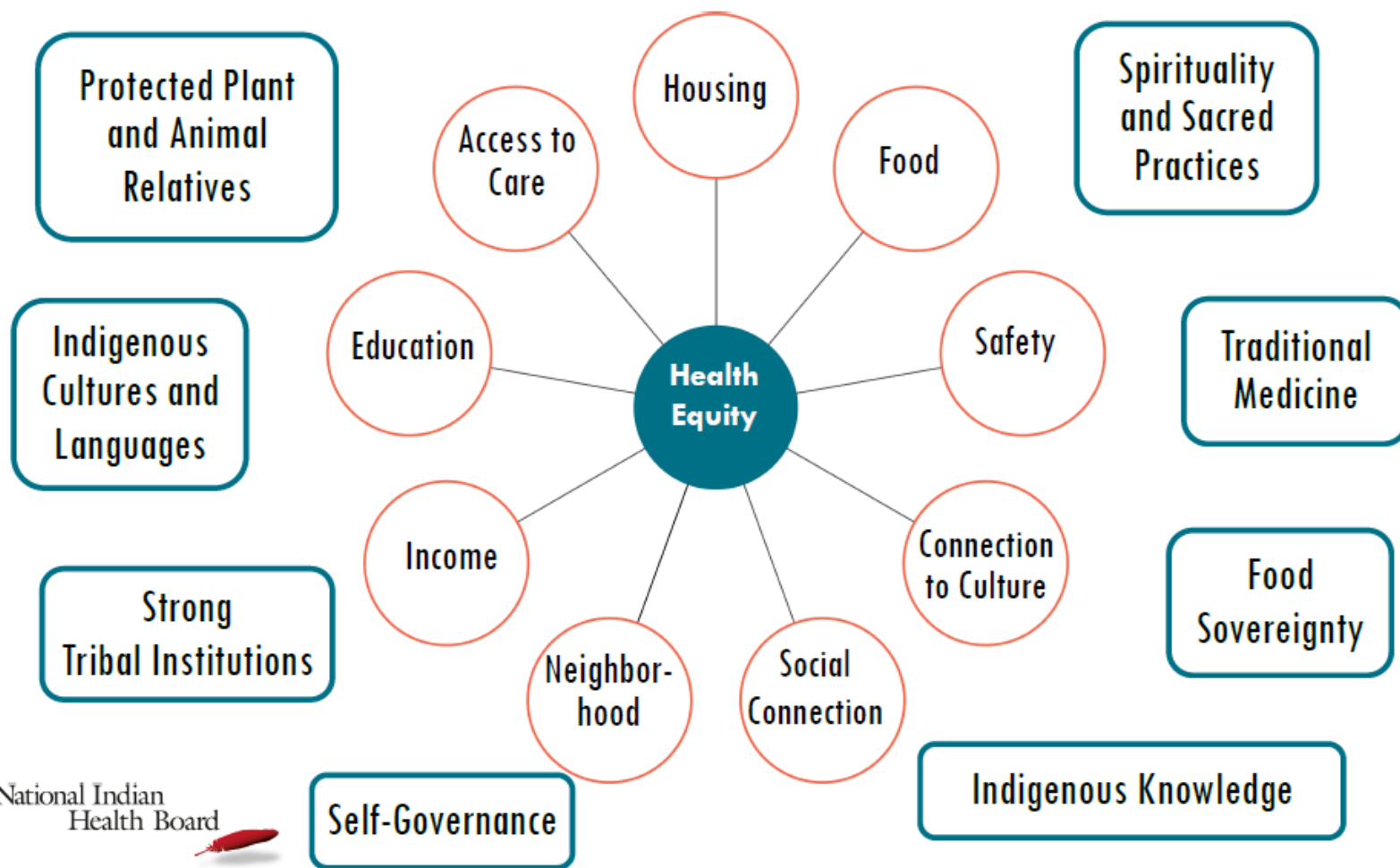
STRUCTURAL and SOCIAL DETERMINANTS: IMPACT ON HEALTH



Web of Causation: Structural and Social Determinants of American Indian and Alaska Native Health



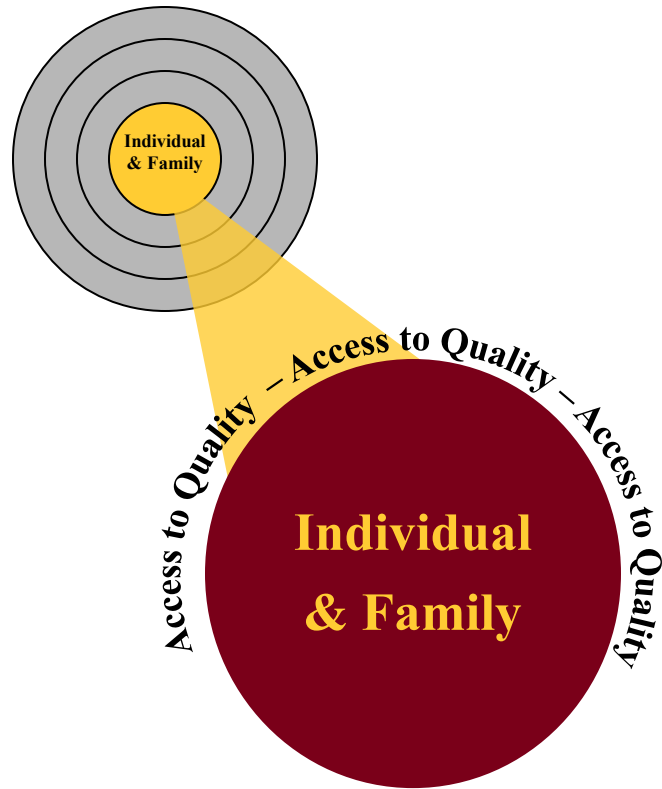
Tribal Sovereignty



American Indian and Alaska Native Health & Wellness Equity Model



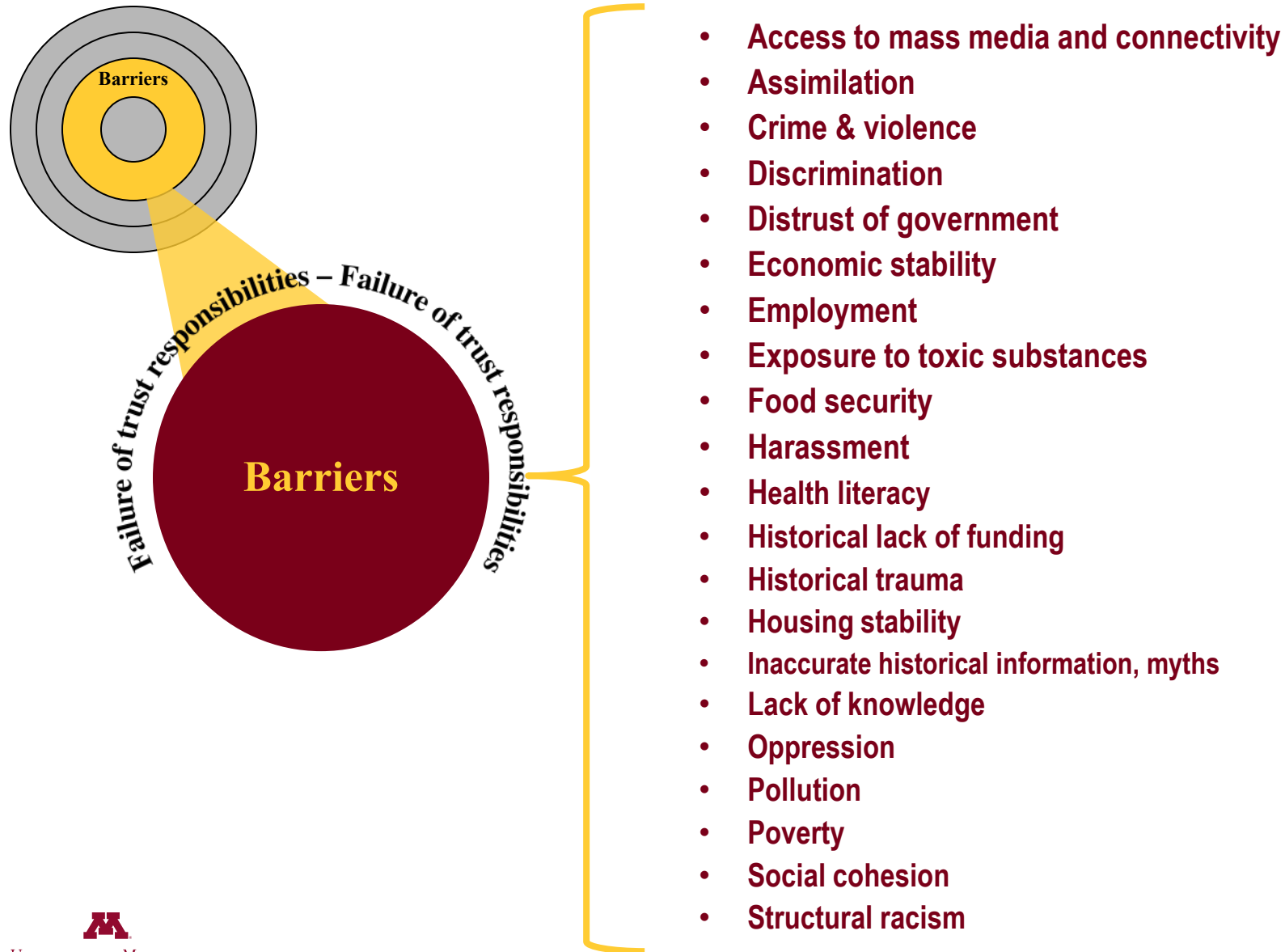
AI/AN Health and Wellness Equity – Individual & Family



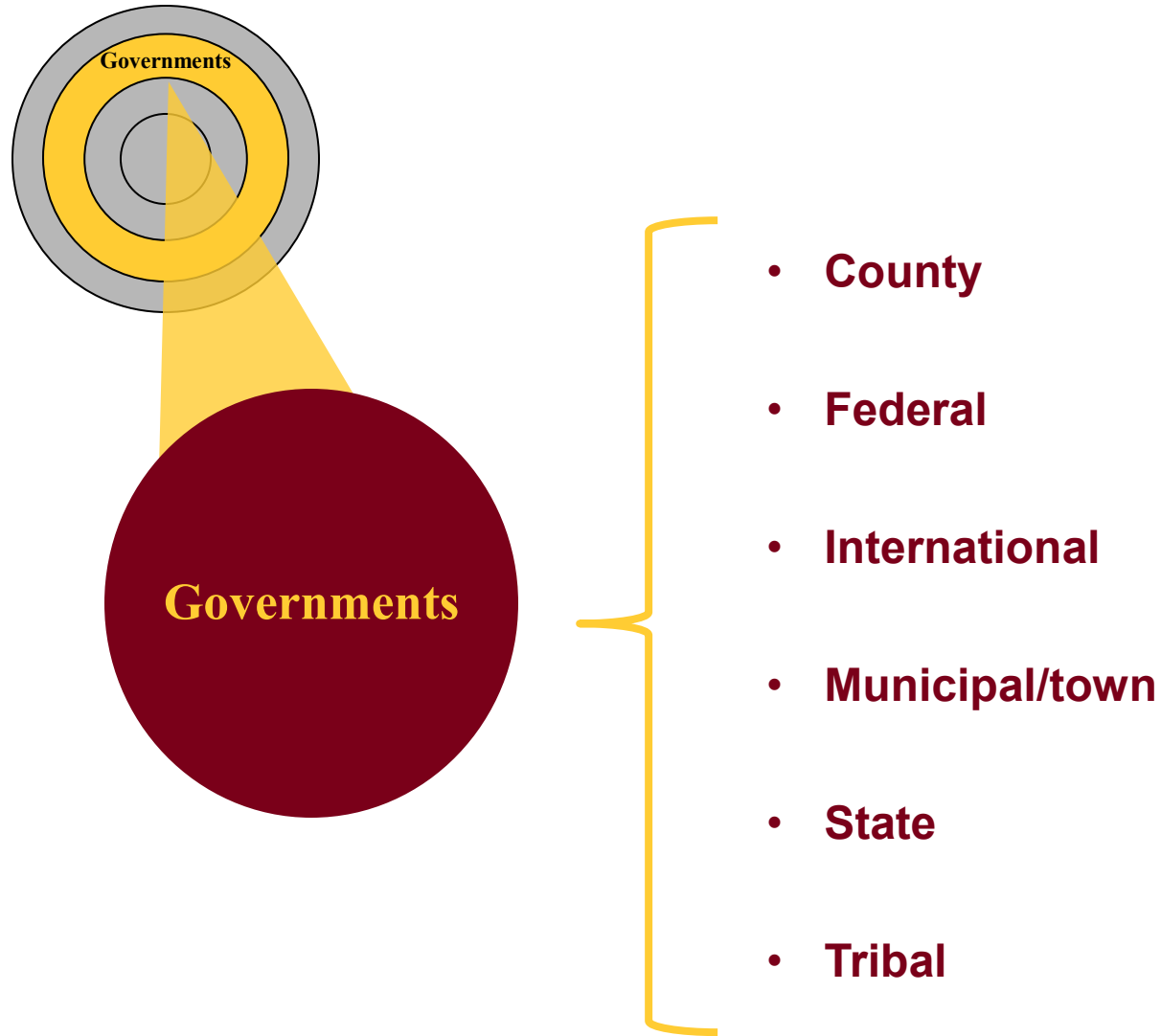
- Accurate historical information
- Affordable, safe housing
- Broadband and communication
- Cultural activities and traditions
- Disability services
- Early childhood development services
- Economic development
- Education (Tribal)
- Equitable law and justice (Tribal)
- Extended family culture
- Financial services
- Health, affordable and nutritious food
- Healthy built and natural environments
- Health services (Tribal)
- Job training
- Livable job wages
- Parks, green spaces, and nature
- Safe, efficient transportation
- Subsistence traditional food/shelter/materials
- Spiritual/faith practices
- Water, air, land



AI/AN Health and Wellness Equity – Barriers



AI/AN Health and Wellness Equity – Governments



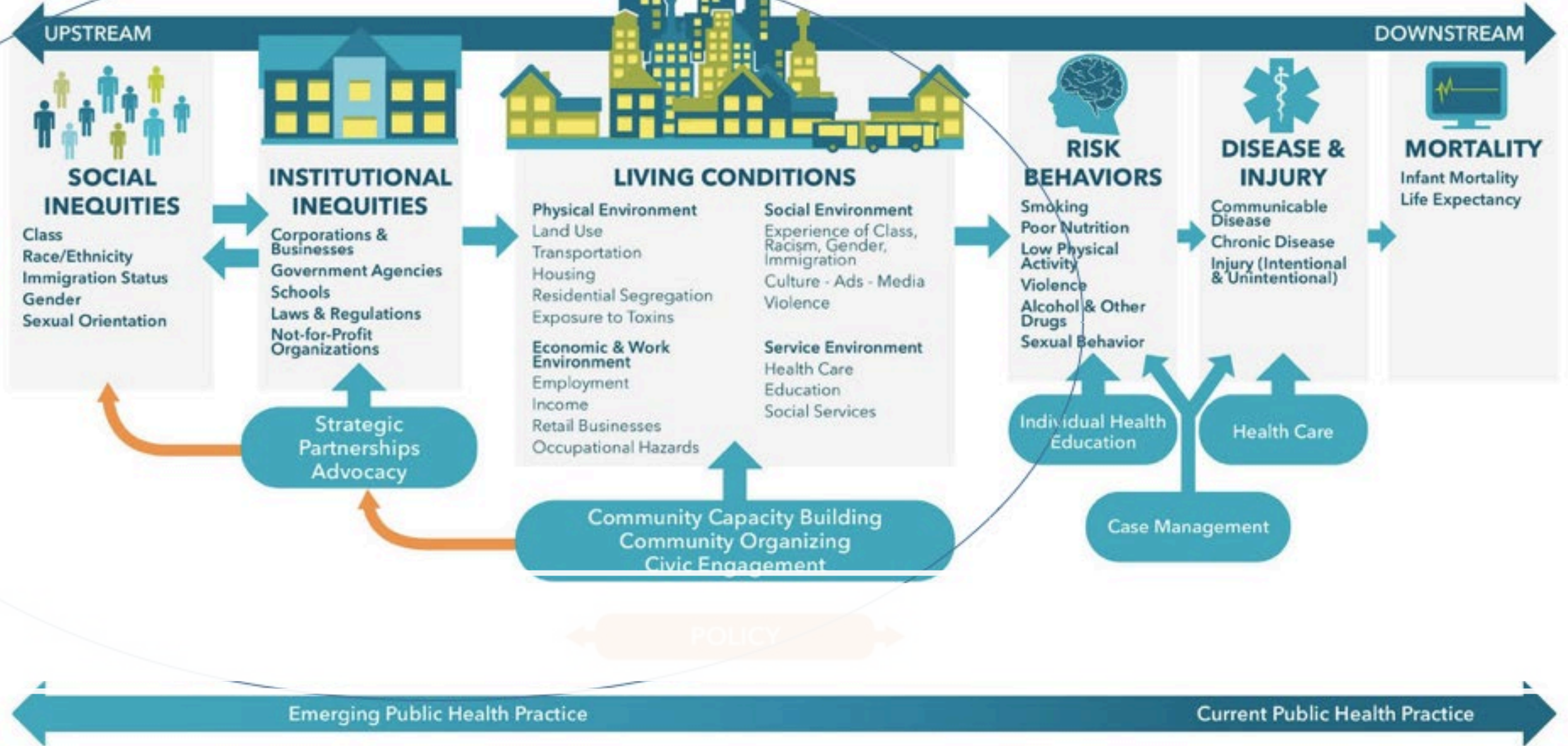
AI/AN Health and Wellness Equity – Goals, Happiness, Achievements, Aspirations, and Targets



- **A home**
- **Access to indigenous roots/life**
- **Balance of life**
- **Desirable education**
- **Food security**
- **Freedom to participate in spiritual and faith based practices**
- **Highest quality of life**
- **Legacy**
- **Life in pollution-free environment**
- **Long, high quality, fulfilling life**
- **Physical & emotional well-being**
- **Responsive, vibrant, safe and supportive communities**
- **Satisfaction and pride of work**
- **Satisfying life**
- **Social cohesion**
- **Vibrant extended family**
- **Wellness in leadership**
- **Years of healthy life**

BARHII Framework

A PUBLIC HEALTH FRAMEWORK FOR REDUCING HEALTH INEQUITIES BAY AREA REGIONAL HEALTH INEQUITIES INITIATIVE



Station Rotations



Find the station with your card number



In your group, choose a notetaker to write down your group's ideas on the flip chart



You'll have 15 minutes to discuss the questions below



When the time comes to move to the next station, one person will stay behind to summarize the key ideas for the next group to add onto

- What's your first impression of this model?
- What do you like about this model? What does it do well?
- What do you wish was different about this model?
- Who might find this model useful?
- What questions does this model leave you with?



Welcome!

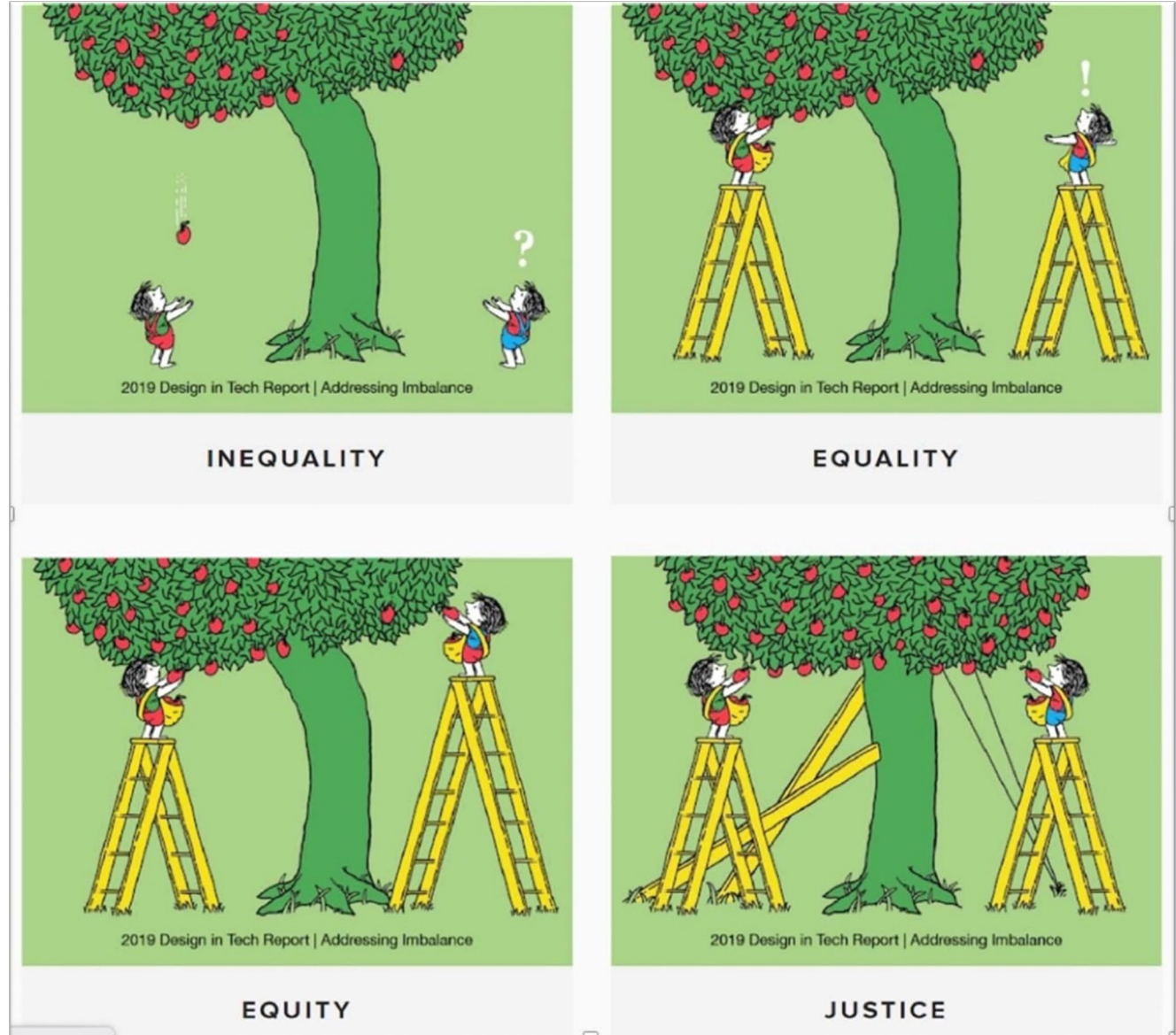
As you come in, take a “gallery walk” to check out the models around the edges of the room.

Discussion Activities

1. With your table, discuss the Rating Scale questions and come to consensus on ratings to mark on the scales. Take notes of your reasoning.
2. Make revisions to the model. Everyone can draw on the models as much as they want – add things, cross things out, draw something new, anything! Consider:
 - a. What would make this model better reflect an Indigenous perspective?
 - b. What would you add? What is missing?
 - c. What would you edit or take out?
 - d. Would you rearrange anything?
 - e. Would this model work better in a different shape or format?

Definitions of Health Equity

- Health equity is the “assurance of the conditions for optimal health for all people by valuing all populations equally, recognizing and rectifying historical injustices, and providing resources according to need.” (Jones)



Definitions of Health Equity

- “Health equity means that everyone has a fair and just opportunity to be as healthy as possible. This requires removing obstacles to health such as poverty, discrimination, and their consequences - including powerlessness and lack of access to good jobs with fair pay, quality education and housing, safe environments, and health care.” (Robert Wood Johnson Foundation)

- “Health equity is the state in which everyone has a fair and just opportunity to attain their highest level of health. Achieving this requires ongoing societal efforts to: Address historical and contemporary injustices; Overcome economic, social, and other obstacles to health and health care; and eliminate preventable health disparities.” (CDC)

Health Equity in Indian Country

Rethinking How the Centers for Medicare & Medicaid Services
Approaches Health Equity for American Indians and Alaska
Natives

National Indian
Health Board



Read the 2023 Report

Before you leave, add a dot sticker on your favorite model

- Make sure to fill out the workshop survey in the conference app – you could win a prize!
- We'll post the results from this session and many other health equity resources at:

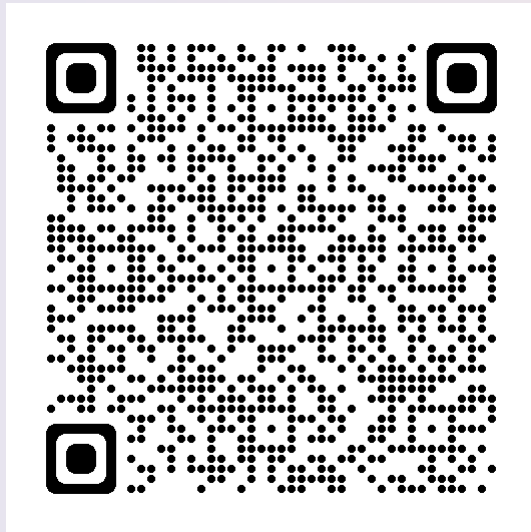
nihb.org/health-equity



WORKSHOP SURVEY

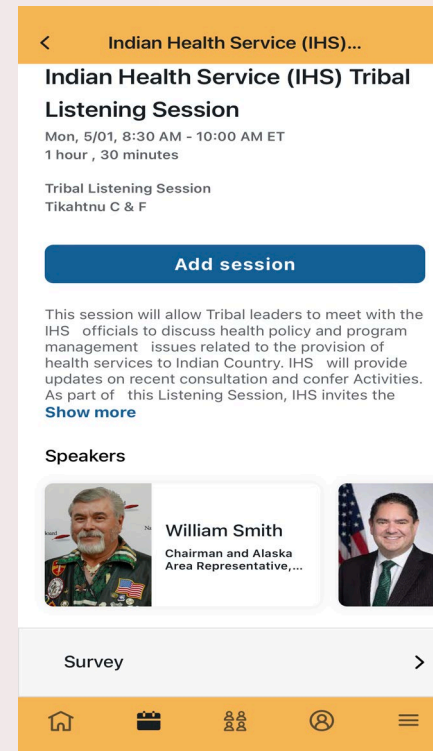
Participants who complete evaluations will be entered into a drawing to win prizes that will be presented at the Closing Plenary Session on Thursday at 3:30 PM.

From Web Browser



Use the QR Code to access the survey from a web browser

From Conference App



Navigate to the session page through the agenda schedule

